

2017

RUBEX™

Interchangeable Hub Propellers

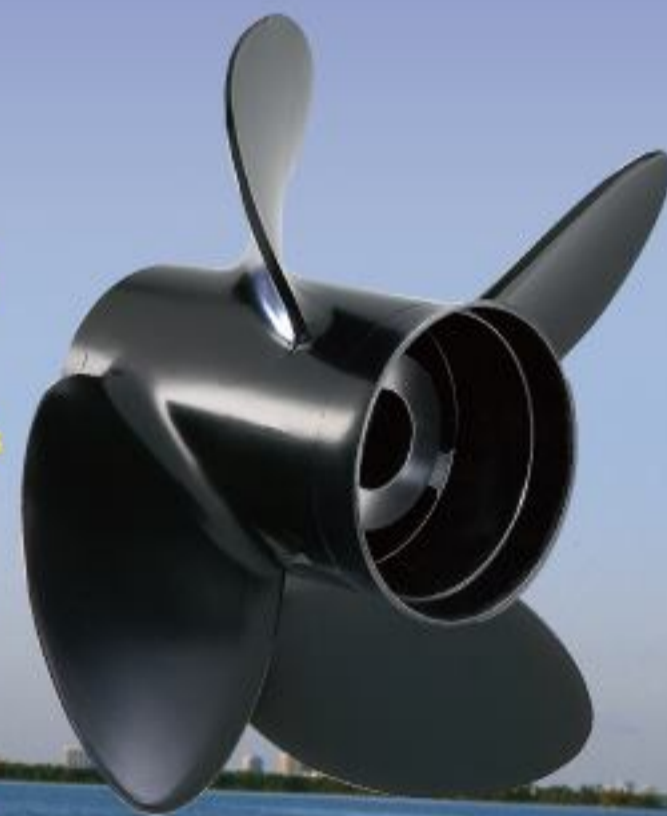
- SOLAS High Performance / Rubber Hub
- Interchangeable with Flo-Torq & Vortex System
- Available: 3 - Blade & 4 - Blade Propellers
Aluminum & Stainless Steel Propellers



(Hub Kit Not Included)
RBX Patent No : U.S 7,488,225



(Hub Kit Not Included)
RBA Patent No : U.S 7,488,225



www.rubexprops.com

RUBEX™ ALUMINUM

Interchangeable Hub Propellers

C 25~ 75 Horsepower (Thru Hub Exhaust) 3-1/4" Gearcase

Aluminum 3 blade RUBEX 3 RBX Rubber Hub				
B	D	P	R	PART NO.
3	12.1	9	R	9311-121-09
3	12	10	R	9311-120-10
3	11.6	11	R	9311-116-11

Aluminum 3 blade RUBEX 3 RBX Rubber Hub				
B	D	P	R	PART NO.
3	11.4	12	R	9311-114-12
3	11.1	13	R	9311-111-13
3	11.1	14	R	9311-111-14
3	11	15	R	9311-110-15

D 40 ~ 140 HP Gearcase 4 -1/4"

Aluminum 3 blade High Thrust RUBEX 3 RBX Rubber Hub NEW!				
B	D	P	R	PART NO.
3	14.1	11	R	9411-141-11



For heavy & pontoon boats

Excellent Forward
and
Reverse Thrust

D 40~ 140 Horsepower (Thru Hub Exhaust) 4-1/4" Gearcase

Aluminum 3 blade RUBEX 3 RBX Rubber Hub				
B	D	P	R	PART NO.
3	14	9	R	9411-140-09
3	14	11	R	9411-140-11
3	13.75	13	R	9411-138-13
3	13.5	14	R	9411-135-14
3	13.5	15	R	9411-135-15
3	13.5	16	R	9411-135-16
3	13.25	17	R	9411-133-17
3	13.25	18	R	9411-133-18
3	13.2	19	R	9411-132-19
3	13.2	21	R	9411-132-21

Aluminum 3 blade RUBEX 3 Plus RBX Rubber Hub				
B	D	P	R	PART NO.
3	13.875	17	R	9411-139-17
3	13.875	19	R	9411-139-19
3	13.875	21	R	9411-139-21

**Recommended for
Suzuki DF 70~ DF 140
(4 Stroke, 15 Tooth Spline)**

Aluminum 4 blade RUBEX 4 RBX Rubber Hub				
B	D	P	R	PART NO.
4	13.25	13	R	9413-133-13
4	13	15	R	9413-130-15
4	12.75	17	R	9413-128-17
4	12.5	19	R	9413-125-19

E 115 and up Horsepower (Thru Hub Exhaust) 4-3/4" Gearcase

Aluminum 3 blade RUBEX 3 RBX Rubber Hub				
B	D	P	R	PART NO.
3	15.5	11	R	9511-155-11
3	15.3	13	R	9511-153-13
3	15	15	R	9511-150-15
3	15	15	L	9512-150-15
3	14.8	17	R	9511-148-17
3	14.8	17	L	9512-148-17
3	14.5	19	R	9511-145-19
3	14.5	19	L	9512-145-19
3	14.3	21	R	9511-143-21
3	14.3	21	L	9512-143-21
3	14.2	23	R	9511-142-23
3	14.2	23	L	9512-142-23

Aluminum 4 blade RUBEX 4 RBX Rubber Hub				
B	D	P	R	PART NO.
4	14.75	15	R	9513-148-15
4	14.5	17	R	9513-145-17
4	14.25	19	R	9513-143-19
4	14	21	R	9513-140-21

**Aluminum 3 blade
iPOP RBX Rubber Hub**

B	D	P	R	PART NO.
3	14.8	18	R	9501-148-18
3	14.5	20	R	9501-145-20
3	14.3	22	R	9501-143-22

Aluminum 3 blade RUBEX 3 Plus RBX Rubber Hub				
B	D	P	R	PART NO.
3	16	13	R	9511-160-13
3	15.8	15	R	9511-158-15
3	15.8	15	L	9512-158-15
3	15.5	17	R	9511-155-17
3	15.5	17	L	9512-155-17
3	15.3	19	R	9511-153-19
3	15.3	19	L	9512-153-19
3	15.3	21	R	9511-153-21
3	15.3	21	L	9512-153-21
3	15.3	23	R	9511-153-23

RUBEX™ STAINLESS STEEL

Interchangeable Hub Propellers

C 25~ 75 Horsepower (Thru Hub Exhaust) 3-1/4" Gearcase

Stainless steel 3 blade RUBEX NS3 RBX Rubber Hub				
B	D	P	R	PART NO.
3	11 5/8	11	R	9331-116-11
3	11 3/8	12	R	9331-114-12
3	11 1/8	13	R	9331-111-13
3	11 1/8	14	R	9331-111-14
3	11	15	R	9331-110-15

Stainless steel 4 blade RUBEX C4 RBX Rubber Hub				
B	D	P	R	PART NO.
4	11 1/2	12	R	9333-115-12
4	11 1/2	13	R	9333-115-13
4	11 1/2	14	R	9333-115-14

⊗ Notice:

1. Engine manufacturer recommends greasing the propeller shaft every 12 months.
2. Make sure all propeller hardware is installed correctly.



D 40~ 140 Horsepower (Thru Hub Exhaust) 4-1/4" Gearcase

Stainless steel 3 blade RUBEX NS3 RBX Rubber Hub					Stainless steel 4 blade RUBEX HR4 RBX Rubber Hub				
B	D	P	R	PART NO.	B	D	P	R	PART NO.
3	13 3/4	13	R	9431-138-13	4	13 1/2	13	R	9453-135-13
3	13 3/4	13	L	9432-138-13	4	13 1/2	13	L	9454-135-13
3	13 1/2	15	R	9431-135-15	4	13 1/4	15	R	9453-133-15
3	13 1/2	15	L	9432-135-15	4	13 1/4	15	L	9454-133-15
3	13 1/4	17	R	9431-133-17	4	13 1/4	16	R	9453-133-16
3	13 1/4	17	L	9432-133-17	4	13	17	R	9453-130-17
3	13	19	R	9431-130-19	4	13	17	L	9454-130-17
3	13	19	L	9432-130-19	4	13	19	R	9453-130-19
3	13	21	R	9431-130-21	4	13	19	L	9454-130-19
					4	13	21	R	9453-130-21
					4	13	21	L	9454-130-21



E 115 and up Horsepower (Thru Hub Exhaust) 4-3/4" Gearcase

Stainless steel 3 blade RUBEX L3 RBX Rubber Hub					Stainless steel 3 blade RUBEX L3 Plus RBX Rubber Hub					Stainless steel 4 blade RUBEX HR4 RBX Rubber Hub				
B	D	P	R	PART NO.	B	D	P	R	PART NO.	B	D	P	R	PART NO.
3	15 3/4	15	R	9571-158-15	3	16	17	R	9571-160-17	4	14 1/2	15	R	9553-145-15
3	15 3/4	15	L	9572-158-15	3	16	17	L	9572-160-17	4	14 1/2	15	L	9554-145-15
3	15 1/2	17	R	9571-155-17	3	16	19	R	9571-160-19	4	14 1/4	17	R	9553-143-17
3	15 1/2	17	L	9572-155-17	3	16	19	L	9572-160-19	4	14 1/4	17	L	9554-143-17
3	15 1/4	19	R	9571-153-19	3	15 3/4	21	R	9571-158-21	4	14 1/8	19	R	9553-141-19
3	15 1/4	19	L	9572-153-19	3	15 3/4	21	L	9572-158-21	4	14 1/8	19	L	9554-141-19
3	15	21	R	9571-150-21	3	15 5/8	23	R	9571-156-23	4	14	21	R	9553-140-21
3	15	21	L	9572-150-21	3	15 5/8	23	L	9572-156-23	4	14	21	L	9554-140-21
3	14 3/4	23	R	9571-148-23						4	14	23	R	9553-140-23
3	14 3/4	23	L	9572-148-23						4	14	23	L	9554-140-23
3	14 1/2	25	R	9571-145-25						4	14	25	R	9553-140-25
3	14 1/2	25	L	9572-145-25						4	14	25	L	9554-140-25
3	14 1/2	27	R	9571-145-27										
3	14 1/2	27	L	9572-145-27										
Stainless steel 3 blade (SAV)System PRO L3 RBX Rubber Hub NEW!					Stainless steel 3 blade RUBEX HR3 RBX Rubber Hub					Stainless steel 4 blade RUBEX L4 RBX Rubber Hub				
B	D	P	R	PART NO.	B	D	P	R	PART NO.	B	D	P	R	PART NO.
3	15 1/4	19	R	9575-153-19	3	15	14	R	9551-150-14	4	15 1/4	18	R	9573-153-18
3	15 1/4	19	L	9576-153-19	3	15	14	L	9552-150-14	4	15 1/4	18	L	9574-153-18
3	15	21	R	9575-150-21	3	14 3/4	16	R	9551-148-16	4	15 1/4	20	R	9573-153-20
3	15	21	L	9576-150-21	3	14 3/4	16	L	9552-148-16	4	15 1/4	20	L	9574-153-20
3	14 3/4	23	R	9575-148-23	3	14 3/4	17	R	9551-148-17	4	15 1/4	22	R	9573-153-22
3	14 3/4	23	L	9576-148-23	3	14 3/4	17	L	9552-148-17	4	15 1/4	22	L	9574-153-22
3	14 1/2	25	R	9575-145-25	3	14 3/4	18	R	9551-148-18	4	15 1/4	24	R	9573-153-24
3	14 1/2	25	L	9576-145-25	3	14 3/4	18	L	9552-148-18	4	15 1/4	24	L	9574-153-24
					3	14 3/4	19	R	9551-148-19	4	15 1/4	26	R	9573-153-26
					3	14 3/4	19	L	9552-148-19	4	15 1/4	26	L	9574-153-26
					3	14 3/4	20	R	9551-148-20	4	15 1/4	28	R	9573-153-28
					3	14 3/4	20	L	9552-148-20					
					3	14 1/2	21	R	9551-145-21					
					3	14 1/2	21	L	9552-145-21					
					3	14 1/4	22	R	9551-143-22					
					3	14 1/4	22	L	9552-143-22					
					3	14	24	R	9551-140-24					
					3	14	24	L	9552-140-24					
Stainless steel 4 blade (SAV)System PRO L4 RBX Rubber Hub NEW!					Stainless steel 3 blade RUBEX S3 RBX Rubber Hub					Stainless steel 3 blade RUBEX NS3 RBX Rubber Hub				
B	D	P	R	PART NO.	B	D	P	R	PART NO.	B	D	P	R	PART NO.
4	15	18	R	9577-150-18 *	3	15 1/8	23	R	9561-151-23	3	14 1/2	15	R	9531-145-15
4	15	18	L	9578-150-18 *	3	15 1/8	24	R	9561-151-24	3	14 1/2	15	L	9532-145-15
4	15	20	R	9577-150-20	3	15 1/8	25	R	9561-151-25	3	14 1/4	17	R	9531-143-17
4	15	20	L	9578-150-20	3	15 1/8	26	R	9561-151-26	3	14 1/4	17	L	9532-143-17
4	15	22	R	9577-150-22	3	15 1/8	27	R	9561-151-27	3	14	19	R	9531-140-19
4	15	22	L	9578-150-22	3	15 1/8	28	R	9561-151-28	3	14	19	L	9532-140-19
4	15	24	R	9577-150-24						3	14	21	R	9531-140-21
4	15	24	L	9578-150-24						3	14	21	L	9532-140-21
4	15	26	R	9577-150-26						3	14	23	R	9531-140-23
4	15	26	L	9578-150-26						3	14	23	L	9532-140-23
4	15	28	R	9577-150-28										

*: coming soon

PRO L3 PRO L4 200 and up Horsepower 4-3/4" Gearcase (SAV)System : SOLAS Adjustable Vent



Hub Kits for RUBEX

RBX Patent No : U.S 7,488,225

RUBEX HUB KIT APPLICATION CHART



RBX Box



Mercury/Mariner/Mercruiser	Hub Kit #	Hub #	Prop Category
25 HP Bigfoot 1999-05, 30 HP Bigfoot 2010 and Newer, 30 HP (2 & 4-Stroke) 1994-05, 30 HP (Sea Pro/Marathon) 1994 & Newer, 35 HP 1984-89, 402 & 500 Models 1974-84, 40-50 HP (2 & 4-Stroke, Not Bigfoot) 1977 & Newer, 45 HP 1986-89, 48 HP (Mariner) All Years, 55 HP (Sea Pro/Marathon) 1995 & Newer, 60 HP (Mariner) 1976, 60 HP (2 & 4 Stroke, Not Bigfoot or Sea Pro/Marathon) 1978 & Newer, 65 HP (Includes Model 650) 1972-76, 70 HP (Includes Model 700) thru 1983, 80 HP (Mariner) 1977; 13 Tooth spline 3-1/4" Gearcase	RBX-114	17013300	C
40-60 HP Bigfoot, 40-140 HP (except 135 HP) V4 Gearcase 1978 & Newer; 15 tooth spline 4-1/4" Gearcase	RBX-102	17015300	D
90HP, 115HP (Command Thrust) 2014 & Newer, 135 HP 1987 & Newer, 150-300 HP 1978 & Newer; 15 tooth spline 4-3/4" Gearcase	RBX-102	17015300	E
Mercruiser Alpha One & Bravo One (less than 400HP); 15 tooth spline Application same as the RBX-102 (Rubber & Bronze Hub)	RBX-102B	17015301	E
Models with 1 1/4" propshaft; 19 tooth spline (Rubber & SS Hub)	RBX-123	17016300	E+
225 EFI (4-Stroke) manufactured by Yamaha; 15 tooth spline 4-3/4" Gearcase	RBX-124	17015300	E
Evinrude/Johnson/BRP			
40 & 50 HP (4-Stroke) 1999-05; 13 tooth spline 3-1/4" Gearcase	RBX-115	17013300	C
40-75 HP (Small Gearcase) 1975-2005; 13 tooth spline 3-3/8" Gearcase	RBX-111	17023300	C
40-75 HP (Large Gearcase) 1968 & Newer, 85-140 HP 1969 & Newer; 13 tooth spline 4-1/4" Gearcase	RBX-106	17024300	D
60 & 70 HP (4-Stroke) 1998 & Newer; 13 tooth spline 4-1/4" Gearcase	RBX-110	17024300	D
90 & 115 HP (4-Stroke) 2002-07; 15 tooth spline 4-1/4" Gearcase	RBX-125	17015300	D
140 HP (4-Stroke) 2002-07; 15 tooth spline 4-1/4" Gearcase	RBX-126	17015300	D
90-300 HP 1991 & Newer; 15 tooth spline 4-3/4" Gearcase	RBX-100	17025300	E
90-300 HP 1976-90; 15 tooth spline 4-3/4" Gearcase	RBX-101	17025300	E
200 & 225 HP (4-Stroke) 2004-2005; 15 tooth spline 4-3/4" Gearcase	RBX-104	17015300	E
200-300 HP G2 Engine 2014 & Newer; 15 tooth spline 4-3/4" Gearcase	RBX-151	17025301	E
Suzuki			
DT 35C 1987-89, DT 40 1983-98, DF 40 & DF 50 (4-Stroke) 1999-10, DF 40A & DF 50A (4-Stroke) 2011 & Newer, DT 50 & 50M 1983-84, DT 55 1985-97, DT 60 1983-84, DF 60A (4-Stroke) 2010 & Newer, DT 65 1985-97; 13 tooth spline 3-1/4" Gearcase	RBX-115	17013300	C
DF 60 (4-Stroke) 1998-09, DF 70 (4-Stroke) 1998-08, DT 75-140 HP 1979-01; 13 tooth spline 4-1/4" Gearcase	RBX-110	17024300	D
DF 70A & DF 80A & DF 90A (4-Stroke) 2009 & Newer; 15 tooth spline 4-1/4" Gearcase	RBX-150	17015300	D
DF 90 2001-08, DF 100 2009 & Newer, DF 115 2001-12, (All 4-Stroke); 15 tooth spline 4-1/4" Gearcase	RBX-125	17015300	D
DF 115A & 140A 2013 & Newer, DF 140 2002-12, (All 4-Stroke); 15 tooth spline 4-1/4" Gearcase	RBX-126	17015300	D
DT 150-225 HP (2-Stroke) 1986 & Newer, DF 150-300 HP (4-Stroke); 15 tooth spline 4-3/4" Gearcase	RBX-104	17015300	E
Volvo			
SX Sterndrives 1994 & Newer; 19 tooth spline 4-3/4" Gearcase	RBX-105	17075300	E

Yamaha	Hub Kit #	Hub #	Prop Category
T25 HP 2010 & Newer, F30 (4-Stroke) 2001-05, F40 (4-Stroke) 1999 & Newer, F50 (4-Stroke) 1995 & Newer, F60 (4-Stroke) 1999 & Newer, 40 HP & 50 HP (not T50) 1984 & Newer, 48 HP 1995-00, 55 HP 1976-95, 60 HP 1976-91 (not T60); 13 tooth spline 3-1/4" Gearcase	RBX-117	17013300	C
T50 1996 & Newer, T60 2003 & Newer, 60 HP (not F60) 1992-05, 70-100 HP 1984 & Newer; 15 tooth spline 4-1/4" Gearcase	RBX-108*	17015300	D
Same application as RBX-108 with Improved Shift Dampening and Vibration Reduction - Yamaha SDS Application	RBX-208	17015302	D
80-140 HP 1977-83; 15 tooth spline 4-1/4" Gearcase	RBX-102	17015300	D
115 HP & 130 HP 1984 & Newer, F115 (4-Stroke) 2000 & Newer; 15 tooth spline 4-1/4" Gearcase	RBX-103*	17015300	D
Same application as RBX-103 with Improved Shift Dampening and Vibration Reduction - Yamaha SDS Application	RBX-203	17015302	D
Same application as RBX-103 with Improved Shift Dampening and Vibration Reduction - Yamaha SDS Application (Rubber & Bronze Hub)	RBX-203B	17015301	D
150-175 HP 1978-83; 15 tooth spline 4-3/4" Gearcase	RBX-102	17015300	E
150-250 HP 1984 & Newer, 15 tooth spline; 300 HP (4-stroke V6 Engine) 2004-2007 & 2010 & Newer; Sterndrives 1989-1993, 15 tooth spline	RBX-103*	17015300	E
Same application as RBX-103 with Improved Shift Dampening and Vibration Reduction - Yamaha SDS Application	RBX-203	17015302	E
Same application as RBX-103 with Improved Shift Dampening and Vibration Reduction - Yamaha SDS Application (Rubber & Bronze Hub)	RBX-203B	17015301	E
300 HP (4-stroke V8 Engine), 350 HP (4-stroke V8 Engine); 17 tooth spline 5-1/4" Gearcase (Rubber & Bronze Hub)	RBX-127	17039300	E+
Nissan/Tohatsu			
35 HP (35B only) Thru 1984, 40 HP 1984 & Newer, 50 HP (All except 50C) 1992 & Newer; 13 tooth spline 3-1/4" Gearcase	RBX-116	17013300	C
50 HP (50C only) 1987-91, 55 HP 1981-88, 60A 1986-99, 70A & 70B 1981-95; 13 tooth spline 3-1/4" Gearcase	RBX-112	17013300	C
60-140 HP (except 60A, 70A, & 70B) 1987 & Newer; 15 tooth spline 4-1/4" Gearcase	RBX-109	17015300	D
Honda			
BF 35 & BF 45 1991-94, BF 40, 50, & 50A 1995 & Newer, BF 60 2010 & Newer; 13 Tooth Spline 3-1/4" Gearcase	RBX-113	17013300	C
BFP 60 2010 & Newer, BF 75 & BF 90 1995 & Newer, BF 115 1998-10, BF 130 1998-04; 15 Tooth Spline 4-1/4" Gearcase	RBX-107	17015300	D
BF 75-90 1995-98; 15 tooth spline 4-1/4" Gearcase	RBX-102	17015300	D
BF 115D 2011 & Newer, BF 135-250 2002 & Newer; 15 Tooth Spline 4-3/4" Gearcase	RBX-107	17015300	E
Application same as the RBX-107 (Rubber & Bronze Hub)	RBX-107B	17015301	E
OMC/Cobra Sterndrives			
Model 400 Cobra 1978-91; 13 tooth spline 4-1/4" Gearcase	RBX-106	17024300	D
Model 800/Cobra/King Cobra 1978-90; 15 tooth spline 4-3/4" Gearcase	RBX-101	17025300	E
Model 800/Cobra/King Cobra 1991-94; 15 tooth spline 4-3/4" Gearcase	RBX-100	17025300	E
Cobra SX 1994 & Newer; 19 tooth spline 4-3/4" Gearcase	RBX-105	17075300	E
Force			
40 & 50 HP 1995-98, 70 HP 1991-95, 75 HP 1996-98; 13 tooth spline 3-1/4" Gearcase	RBX-114	17013300	C
75-150 HP (Thru Hub Exhaust) 1995-99, 85-150 HP (Dual Exhaust) 1988-94; 15 Tooth Spline 4-3/4" Gearcase	RBX-102	17015300	D

*The RBX-103 & RBX-108 have been superseded by the Improved RBX-203 & RBX-208

You need a Hub Kit and a Prop for complete installation :

1. Locate Horsepower/Model and Year. 2. Read across to reference RUBEX™ Hub Kit/Propeller series. 3. Select propeller diameter & pitch from corresponding propeller series.

Ho-Torq is a registered trademark of the Brunswick Corporation.

Vertex is a registered trademark of Michigan Wheel Corporation.

OMC, Cobra, King Cobra, Cobra SX, Evinrude/Johnson/BRP are registered trademarks of the Bombardier Recreational Products Inc., Mercury, Mariner, Mercruiser, Typhoon, Quicksilver & Force are registered trademarks of the Brunswick Corporation. Volvo is a registered trademark of Volvo Penta Marine Products L.P. Suzuki is a registered trademark of the Suzuki Motor Corp. Yamaha is a registered trademark of the Yamaha Corp. Honda is a registered trademark of the Honda Motor Co., Ltd. Tohatsu is a registered trademark of the Tohatsu Corp. Nissan is a registered trademark of the Nissan Jidosha Motor Corp.



Printed in Taiwan.
9990307 SEP. 2016

